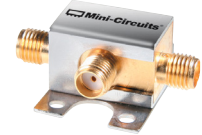


# Coaxial Frequency Mixer

## ZX05-C24LH+

Level 10 (LO Power +10 dBm) 300 to 2400 MHz



CASE STYLE: FL905

Connectors Model  
SMA ZX05-C24LH-S+

**+RoHS Compliant**

The +Suffix identifies RoHS Compliance. See our web site for RoHS Compliance methodologies and qualifications

### Maximum Ratings

Operating Temperature	-40°C to 85°C
Storage Temperature	-55°C to 100°C
RF Power	50mW
IF Current	40mA
Permanent damage may occur if any of these limits are exceeded.	

### Coaxial Connections

LO	1
RF	2
IF	3

### Features

- rugged construction
- small size
- low conversion loss
- high L-R isolation
- protected by US Patents 6,790,049 & 7,027,795

### Applications

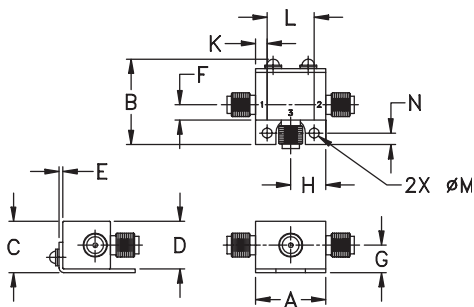
- cellular
- PCS
- instrumentation
- satellite communication

### Electrical Specifications (T<sub>AMB</sub>=25°C)

FREQUENCY (MHz)	CONVERSION LOSS (dB)	LO-RF ISOLATION (dB)		LO-IF ISOLATION (dB)		IP3 at center band (dBm)
		Typ.	Min.	Typ.	Min.	
300-2400	DC-700	40	25	30	15	13

1 dB COMP.: +5 dBm typ.  
m= mid band [2f<sub>i</sub> to f<sub>i</sub>/2]

### Outline Drawing



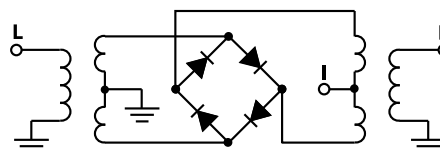
### Outline Dimensions (inch/mm)

A	B	C	D	E	F	G
.74	.90	.54	.50	.04	.16	.29
18.80	22.86	13.72	12.70	1.02	4.06	7.37
H	J	K	L	M	N	wt
.37	--	.122	.496	.106	.122	grams
9.40	--	3.10	12.60	2.69	3.10	20.0

### Typical Performance Data

Frequency (MHz)	Conversion Loss (dB)	Isolation L-R (dB)	Isolation L-I (dB)	VSWR RF Port (:1)	VSWR LO Port (:1)
300.10	330.11	5.70	53.04	2.14	15.23
407.79	437.80	5.14	42.05	1.71	3.78
515.49	545.50	6.04	39.80	2.99	1.99
623.18	653.19	5.94	59.61	3.24	1.72
730.87	760.88	5.61	41.90	2.83	2.22
838.56	868.57	6.00	40.08	3.36	2.99
1000.10	1030.11	6.03	41.25	3.20	3.07
1107.79	1137.80	6.16	41.82	3.28	3.27
1215.49	1245.50	6.05	42.41	3.01	3.72
1323.18	1353.19	6.48	42.37	3.16	3.62
1430.87	1460.88	5.53	41.58	3.16	2.81
1538.56	1568.57	4.92	39.23	2.92	1.86
1700.10	1730.11	5.02	34.19	2.85	1.84
1807.79	1837.80	5.33	35.50	2.53	1.77
1915.49	1945.50	5.45	33.18	2.40	2.14
2023.18	2053.19	5.80	32.63	2.46	2.38
2130.87	2160.88	6.86	33.32	2.90	2.41
2346.25	2376.26	5.93	36.33	2.52	3.05
2400.10	2370.09	6.03	34.46	2.94	3.47

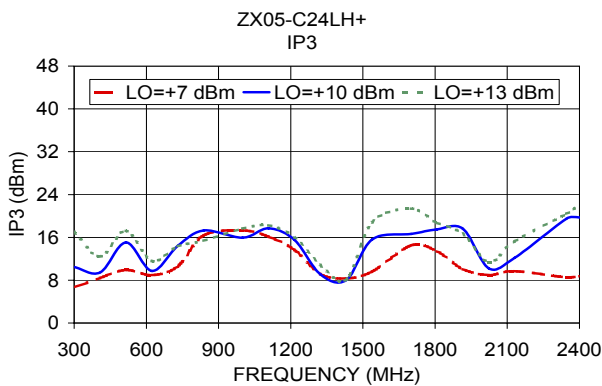
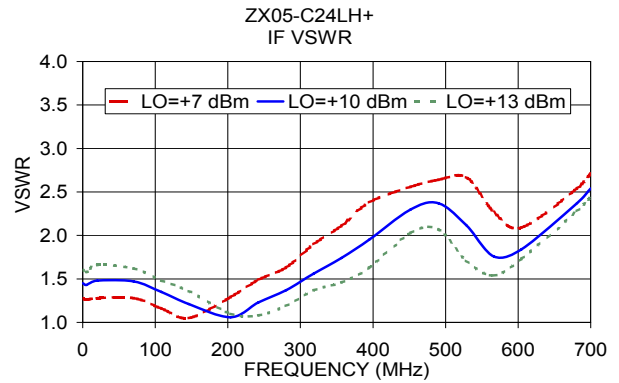
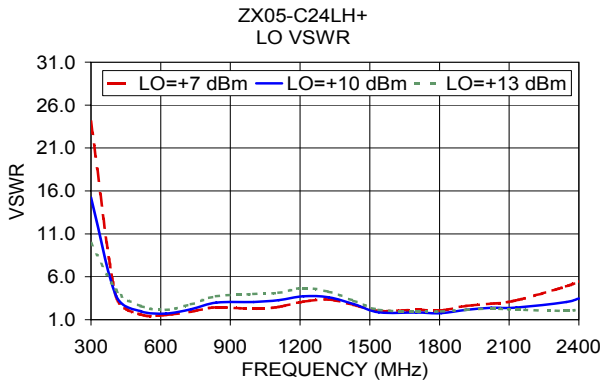
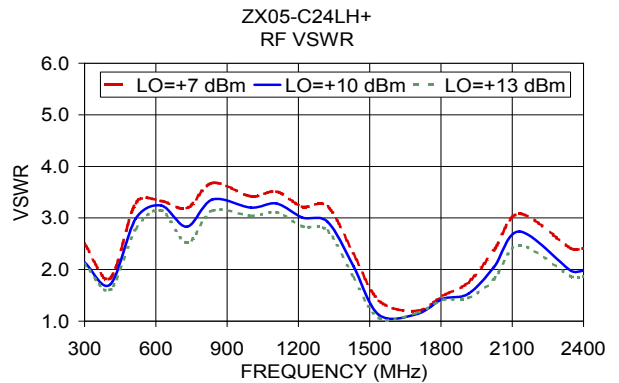
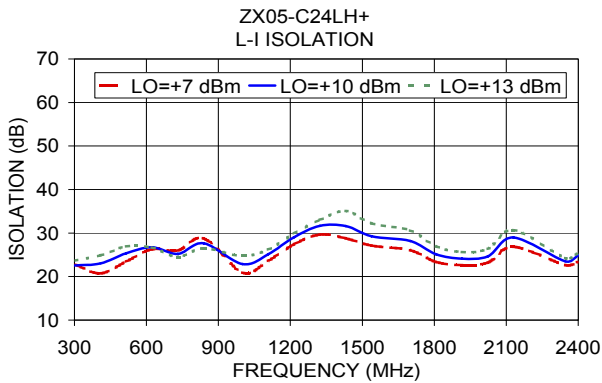
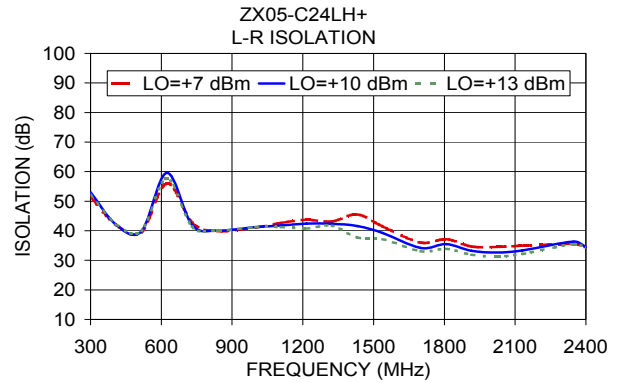
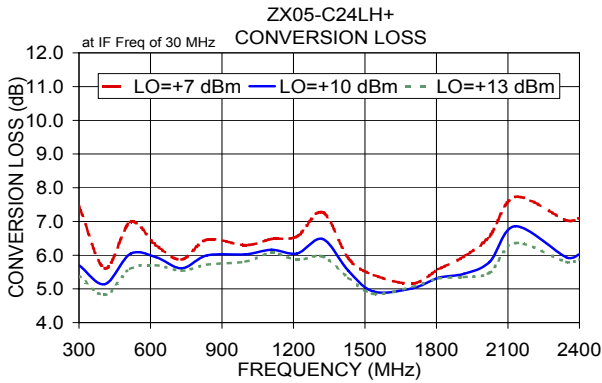
### Electrical Schematic



### Notes

- Performance and quality attributes and conditions not expressly stated in this specification document are intended to be excluded and do not form a part of this specification document.
- Electrical specifications and performance data contained in this specification document are based on Mini-Circuit's applicable established test performance criteria and measurement instructions.
- The parts covered by this specification document are subject to Mini-Circuits standard limited warranty and terms and conditions (collectively, "Standard Terms"); Purchasers of this part are entitled to the rights and benefits contained therein. For a full statement of the Standard Terms and the exclusive rights and remedies thereunder, please visit Mini-Circuits' website at [www.minicircuits.com/MCLStore/terms.jsp](http://www.minicircuits.com/MCLStore/terms.jsp)





**Notes**

- A. Performance and quality attributes and conditions not expressly stated in this specification document are intended to be excluded and do not form a part of this specification document.
- B. Electrical specifications and performance data contained in this specification document are based on Mini-Circuit's applicable established test performance criteria and measurement instructions.
- C. The parts covered by this specification document are subject to Mini-Circuits standard limited warranty and terms and conditions (collectively, "Standard Terms"); Purchasers of this part are entitled to the rights and benefits contained therein. For a full statement of the Standard Terms and the exclusive rights and remedies thereunder, please visit Mini-Circuits' website at [www.minicircuits.com/MCLStore/terms.jsp](http://www.minicircuits.com/MCLStore/terms.jsp)

